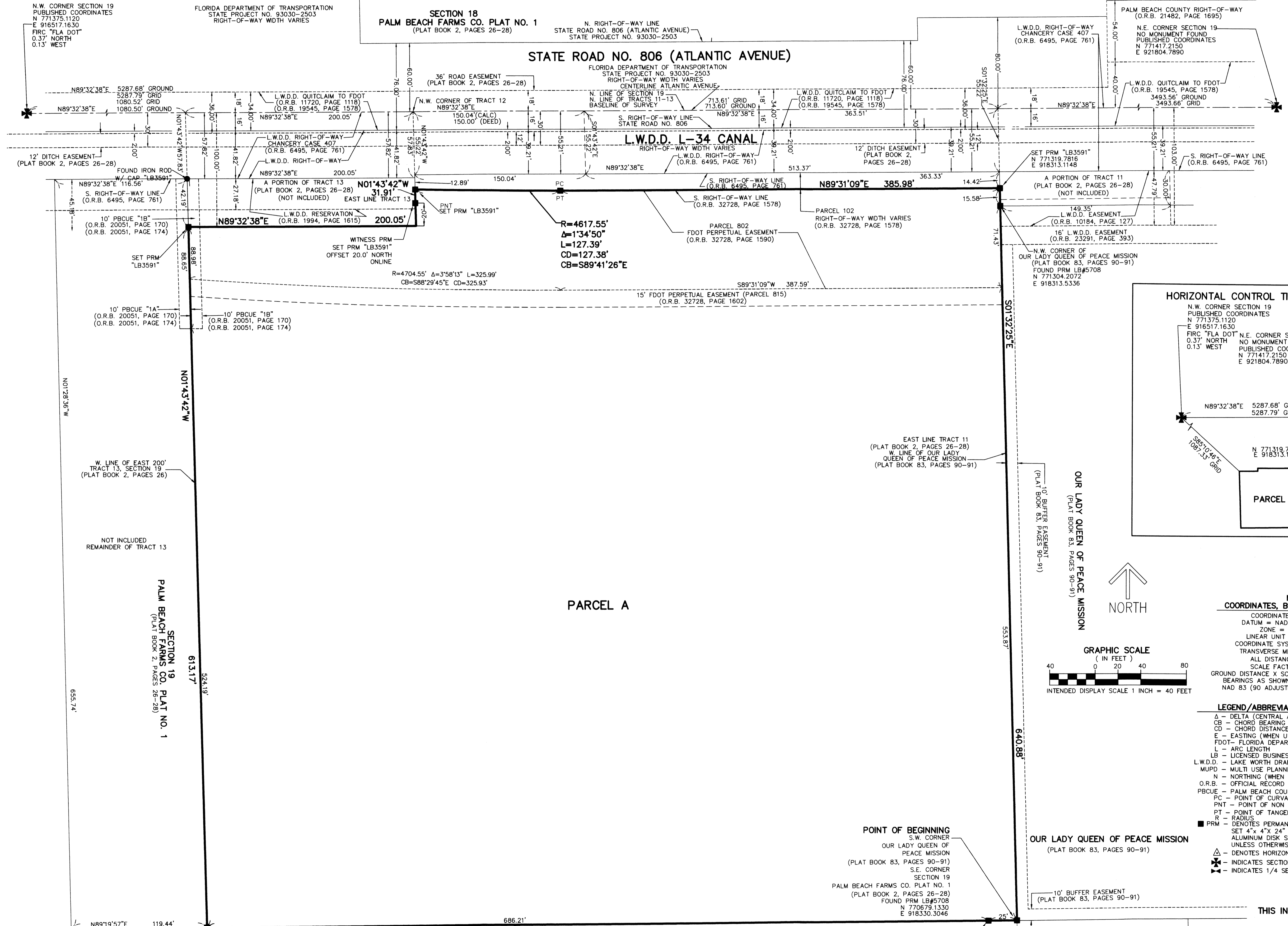


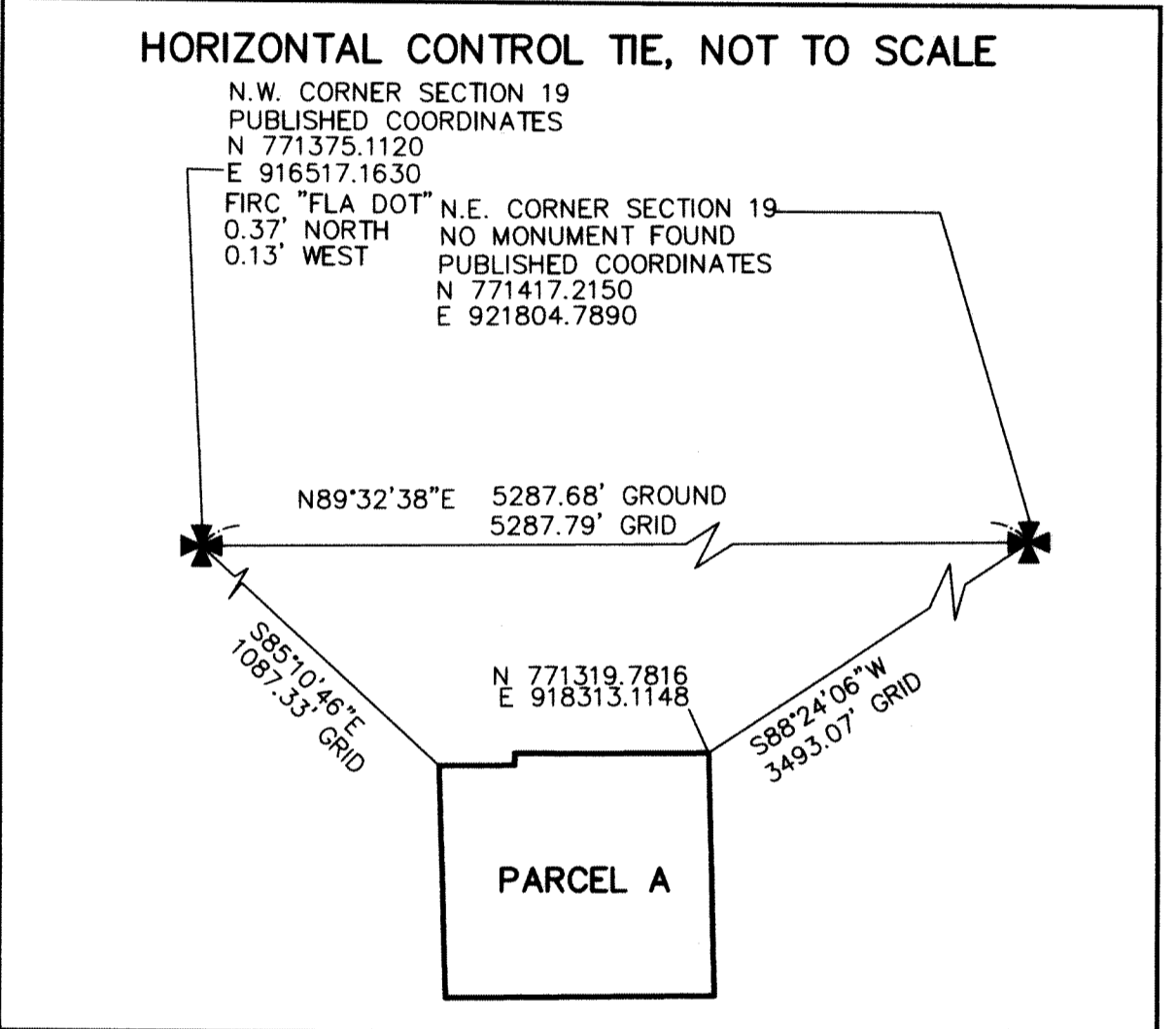
WEST ATLANTIC BUSINESS PLAZA MUPD

BEING A REPLAT OF A PORTION OF TRACTS 11, 12 AND 13, SECTION 19, TOWNSHIP 46 SOUTH, RANGE 42 EAST, PALM BEACH FARMS CO. PLAT NO. 1, ACCORDING TO THE PLAT THEREOF, AS RECORDED IN PLAT BOOK 2, PAGE 26 OF THE PUBLIC RECORDS OF PALM BEACH COUNTY, FLORIDA, LYING IN SECTION 19, TOWNSHIP 46 SOUTH, RANGE 42 EAST, PALM BEACH COUNTY, FLORIDA.

151



SHEET 2 OF 2



NOTES
COORDINATES, BEARINGS AND DISTANCES
COORDINATES SHOWN ARE GRID
DATUM = NAD 83 (90 ADJUSTMENT)
ZONE = FLORIDA EAST
LINEAR UNIT = US SURVEY FEET
COORDINATE SYSTEM 1983 STATE PLANE
TRANSVERSE MERCATOR PROJECTION
ALL DISTANCES ARE GROUND
SCALE FACTOR = 1.0000205
GROUND DISTANCE X SCALE FACTOR = GRID DISTANCE
BEARINGS AS SHOWN HEREON ARE GRID DATUM,
NAD 83 (90 ADJUSTMENT), FLORIDA EAST ZONE.

LEGEND/ABBREVIATIONS
Δ - DELTA (CENTRAL ANGLE)
CB - CHORD BEARING
CD - CHORD DISTANCE
E - EASTING (WHEN USED WITH COORDINATES)
FDOT - FLORIDA DEPARTMENT OF TRANSPORTATION
L - ARC LENGTH
LB - LICENSED BUSINESS
L.W.D.D. - LAKE WORTH DRAINAGE DISTRICT
MUPD - MULTI USE PLANNED DEVELOPMENT
N - NORTHING (WHEN USED WITH COORDINATES)
O.R.B. - OFFICIAL RECORD BOOK
PBCUE - PALM BEACH COUNTY WATER UTILITIES DEPARTMENT EASEMENT
PC - POINT OF CURVATURE
PNT - POINT OF NON TANGENCY
PT - POINT OF TANGENCY
R - RADIUS
PRM - DENOTES PERMANENT REFERENCE MONUMENT
SET 4" x 4" x 24" CONCRETE MONUMENT WITH
ALUMINUM DISK STAMPED "C&W PRM LB3591"
UNLESS OTHERWISE NOTED
△ - DENOTES HORIZONTAL CONTROL POINT
✱ - INDICATES SECTION CORNER
✱ - INDICATES 1/4 SECTION CORNER

